

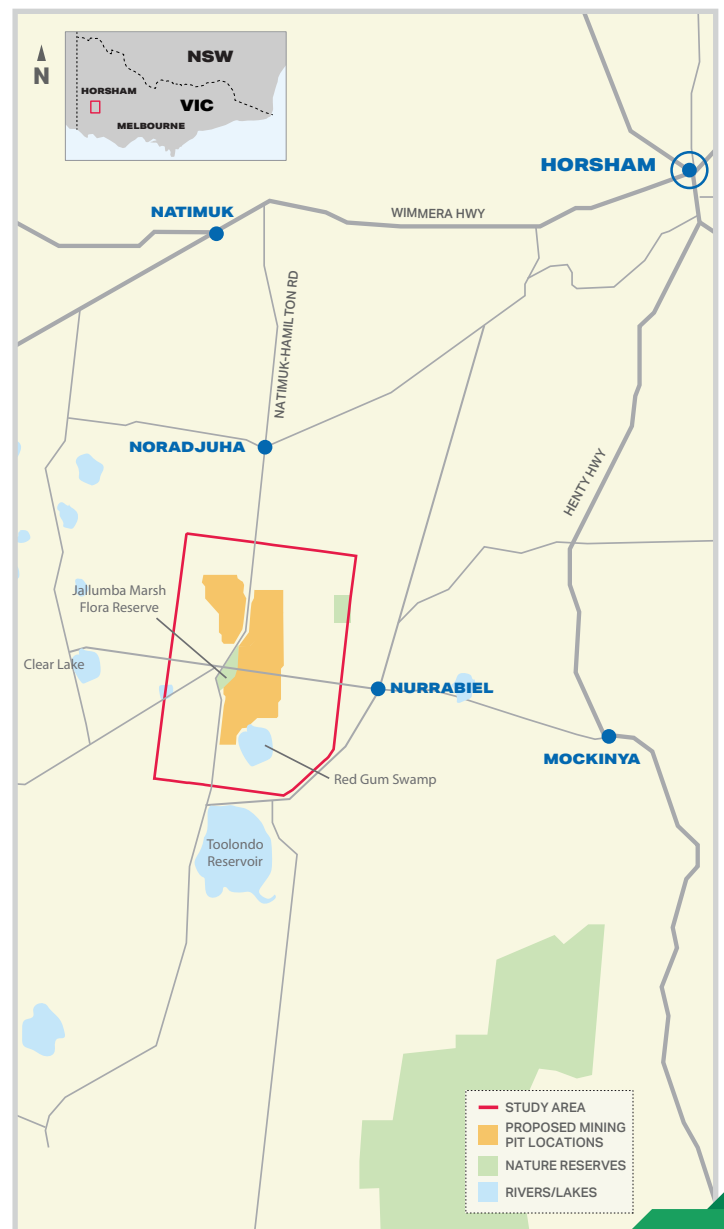
WIMMERA PROJECT



Iluka Resources proposes to develop a critical minerals mine in western Victoria, known as the Wimmera Project.

The project is located approximately 35km south-west of Horsham and 25km north-east of Balmoral and is comprised of an open pit mine, processing plant, tailings storage facility and ancillary infrastructure to extract mineral sands from the WIM100 deposit. The project will contribute to Iluka's portfolio of high-grade, high-quality critical minerals, including refined zircon, titanium dioxide and rare earth products.

The mine life is estimated at 23 years with a mining pit area of approximately 1,600 hectares, and an additional 1,700 hectares of ancillary infrastructure and stockpiles. Zircon and titanium dioxide products will be packaged and transported to customers, while the rare earth concentrate will be transported to Iluka's rare earths refinery at Eneabba in Western Australia. Mined areas will be progressively rehabilitated as the mine advances, with the aim of restoring land to be equivalent to its pre-mining capability, or to another end land use as agreed with landowners and regulators.

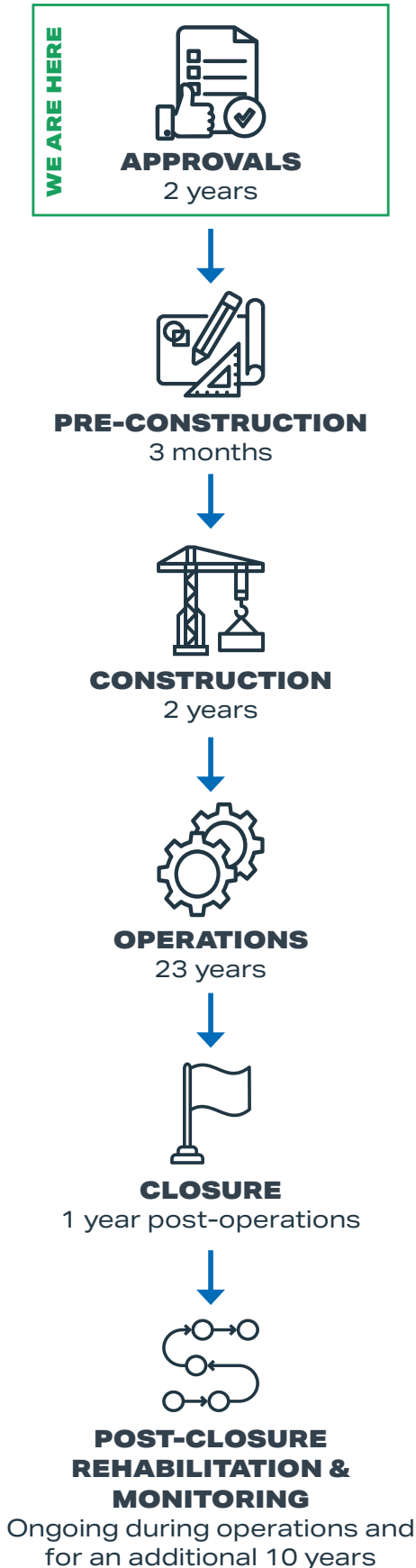


WHAT ARE CRITICAL MINERALS USED FOR?

Zircon and rutile are essential for many of the everyday products we use including ceramics, paints, plastics and titanium metals.

Rare earths are essential to produce the permanent magnets in electric motors, used most notably in electric vehicles, as well as wind turbines and defence applications.

PROJECT TIMELINE



This timeline is indicative only and is subject to change.

WHAT STAGE IS THE PROJECT AT?

The project is in the definitive feasibility study phase, after progressing from the pre-feasibility study phase in February 2023. A wide range of investigations and assessments continue to take place on various aspects of the project, including engineering, geological, environmental and social, to inform project planning and the Environment Effects Statement (EES) that is being prepared for assessment by the Victorian Government.

The definitive feasibility study is expected to be completed in 2027. Subject to positive study outcomes and government approvals, Iluka's Board of Directors will consider a final investment decision to execute the project. If the project is approved, pre-construction and construction activities will commence.

OUR COMMITMENT TO SUSTAINABILITY AND REHABILITATION

Iluka has a strong record of safe and responsible operations and is committed to sustainable, transparent and ethical practices. Iluka is a leader in land rehabilitation, with a dedication to ensuring positive biodiversity and environmental outcomes. Our rehabilitation and mine closure experience spans over 50 years throughout Australia, including 17 years in western Victoria.

IN THE COMMUNITY

Iluka has a long history of working collaboratively with local communities across Australia, including in western Victoria. We support and provide meaningful employment opportunities to the communities in which we operate, and today we employ around 1,000 people directly. Iluka estimates that the Wimmera Project will provide approximately 300 jobs during construction and 320 jobs during operations, including contractors.

We also work with local contracting organisations to support a significant amount of community engagement opportunities during the various phases of our projects. It is important to Iluka that we develop and maintain positive relationships with all of our stakeholders, including Traditional Owners.

Iluka also partners with a number of community groups and contributes to many local programs and events. In 2024, we contributed approximately \$1.2 million in community donations, sponsorships and education partnerships around Australia.

HOW CAN I BE INVOLVED?

Iluka is committed to providing a range of opportunities for key stakeholders and community members to inform project planning. As the project progresses, Iluka will continue to undertake community engagement to ensure open, honest and transparent communication.

Iluka has engaged EMM Consulting to undertake a social impact assessment (SIA) for the project which will assist us in better understanding key social impacts and identifying strategies to manage these impacts and enhance opportunities within the region. The SIA involves significant stakeholder and community consultation, and will form part of the EES submission to the Department of Transport and Planning in 2026.

Stakeholders can also participate in the State and Commonwealth government approvals public comments processes.

Further information on the Wimmera Project and the approvals process is available on the Iluka website, and stakeholders can get in touch with Iluka using the methods below.

 1800 305 993 (24/7 Iluka Community hotline)

 wimmera.project@iluka.com

 www.iluka.com/community-engagement/wimmera

ILUKA

