

**ILUKA**

Australian Securities Exchange Notice

17 August 2018

ASX: ILU

Half Year Results Presentation – Footnote Update

Iluka Resources Limited (Iluka) released its half year results to 30 June 2018 via the ASX on 16 August 2018. The results included a presentation *Iluka 2018 Half Year Results Slide Pack* which contained an erroneous footnote on slide 22 for the Sierra Rutile Expansion Profile, referring to rougher head feed rate when it should have stated ore feed rate.

The original footnote read:

“1. Rates refer to tonnes per hour (tph) rougher head feed and are an indicator of capacity of each concentrator and not expected production”.

The updated slide pack notes:

“1. Rates refer to tonnes per hour (tph) ore feed rate and are an indicator of capacity of each concentrator and not expected production”.

In addition, additional cautionary statements have been included on slide 22 and slide 23, as reflected in the ASX release *Sembehun Mineral Resource Increase and Pejebu Exploration Target, Sierra Rutile* on 15 August 2018 as required under Chapter 5 of the Listing Rules and the JORC Code (2012 Edition).

An updated version of the slide pack has been lodged on the ASX platform today.

Investment market enquiries:

Adele Stratton
General Manager Finance and Investor Relations
Phone: + 61 (0) 8 9360 4631
Mobile: +61 (0) 415 999 005
Email: adele.stratton@iluka.com

Media enquiries:

Luke Woodgate
Manager, Corporate Affairs
Phone: + 61 (0) 8 9360 4785
Mobile: +61 (0) 477 749 942
Email: luke.woodgate@iluka.com

For personal use only

2018 Half Year Results

Iluka Resources Limited

Tom O'Leary, Managing Director
Doug Warden, Chief Financial Officer
Matthew Blackwell, Head of Marketing and Procurement

20
18



WWW.ILUKA.COM | ASX:ILU

Disclaimer



This presentation has been prepared by Iluka Resources Limited (Iluka). By accessing/attending this presentation you acknowledge that you have read and understood the following statement.

Forward Looking Statements

This presentation contains certain statements which constitute "forward-looking statements". Often, but not always, forward looking statements can generally be identified by the use of forward looking words such as "may", "will", "expect", "plan", "believes", "estimate", "anticipate", "outlook" and "guidance", or similar expressions, and may include, without limitation, statements regarding plans; strategies and objectives of management; anticipated production and production potential; estimates of future capital expenditure or construction commencement dates; expected costs or production outputs; estimates of future product supply, demand and consumption; statements regarding future product prices; and statements regarding the expectation of future Mineral Resources and Ore Reserves.

Where Iluka expresses or implies an expectation or belief as to future events or results, such expectation or belief is expressed in good faith and on a reasonable basis. No representation or warranty, express or implied, is made by Iluka that the matters stated in this presentation will in fact be achieved or prove to be correct.

Forward-looking statements are only predictions and are subject to known and unknown risks, uncertainties, assumption and other important factors that could cause the actual results, performances or achievements of Iluka to differ materially from future results, performances or achievements expressed, projected or implied by such forward-looking statements. Readers are cautioned not to place undue reliance on these forward-looking statements, which speak only as of the date thereof. Such risks and factors include, but are not limited to: changes in exchange rate assumptions; changes in product pricing assumptions; major changes in mine plans and/or resources; changes in equipment life or capability; emergence of previously underestimated technical challenges; increased costs and demand for production inputs; and environmental or social factors which may affect a licence to operate, including political risk.

Capital estimates include contingency and risk allowances commensurate with international estimating classification systems.

To the extent permitted by law, Iluka, its officers, employees and advisors expressly disclaim any responsibility for the accuracy or completeness of the material contained in this presentation and exclude all liability whatsoever (including in negligence) for any loss or damage which may be suffered by a person as a consequence of any information in this presentation or any error or omission therefrom. Iluka does not undertake to release publicly any revisions to any forward-looking statement to reflect events or circumstances after the date of this presentation, or to reflect the occurrence of unanticipated events, except as may be required under applicable securities laws.

No independent third party has reviewed the reasonableness of the forward looking statements or any underlying assumptions.

Non-IFRS Financial Information

This document contains non-IFRS financial measures including cash production costs, non production costs, Mineral Sands EBITDA, Group EBITDA. Iluka management considers these to be key financial performance indicators of the business and they are defined and/or reconciled in Iluka's annual results materials and/or Annual report. Non-IFRS measures have not been subject to audit or review.

All figures are expressed in Australian dollars unless stated otherwise.

Safety and Sustainability

Ongoing integration of Iluka's **safety and risk mitigation framework** to strengthen Sierra Rutile's sustainability performance



Sierra Rutile Limited

Group total recordable injury frequency rate (**TRIFR**) 2.7



Completion of **440 hectares** of rehabilitation



Annual Sustainability Report was released April 2018 at www.iluka.com

MEMBER OF

Dow Jones Sustainability Indices

In Collaboration with RobecoSAM 

Incorporated into **DJSI Australia index** for leading sustainability performance



Senior female representation

30%

Executive management

29%

Board

Key Features

| | |
|--|---|
| Positive market conditions | Mineral sands revenue up 21% from first half 2017 to \$607 million |
| Zircon | Zircon (premium and standard) prices up 47% on H1 2017 Q4 2018 Zircon Reference Price increased by US\$170 to US\$1,580 per tonne |
| High-grade titanium feedstock | Rutile ¹ prices up 20% on H1 2017, and a 14% price increase applied for H2 2018 All second half high-grade feedstock production either under contract or allocated to customers |
| Strong free cash flow | Free cash flow of \$226 million Continued draw down of inventory |
| Net debt reduction | Net debt reduced to \$34 million at 30 June 2018 (3.5% gearing) from \$183 million in December 2017 |
| Financials | Underlying EBITDA up 80% from first half 2017 to \$279 million First half 2018 NPAT of \$126 million |
| Cataby development and Lanti/Gangama expansions | All works progressing on time and on budget |
| Mining Area C royalty income | Mining Area C royalty income of \$29 million including additional capacity payment of \$1 million South Flank expansion project approved by BHP board, first ore expected 2021 |
| Dividend | Interim dividend of 10 cents per share fully franked |

¹Excludes HYTI

Zircon Market

Result

- First half 2018 zircon sales of 190kt, slightly lower vs H1 2017
- Reflects more evenly weighted sales spread over year vs 2017
- H1 2018 zircon production of 159kt
- Iluka continues to release inventory to ease shortage and help balance market

Pricing

- Zircon price (excl. concentrate) up 47% vs H1 2017
- Six monthly reference pricing intervals receiving positive feedback
- Q2 2018 Zircon Reference Price¹ increased by US\$180/t to US\$1,410/t
- Q4 2018 Zircon Reference Price increase of US\$170/t to US\$1,580/t

Supply/Demand

- Solid demand for Iluka products across all major sectors and regions
- Some tightness remains driven by supply side constraints
- Ramp-up of production from Indonesian artisanal 'swing' producers
- No evidence of substitution, thrifting more apparent in some markets

¹ Iluka's Zircon Reference Price is based on a 2 tonne bag of Zircon Premium, Delivered At Terminal, ex-China warehouse.



2018 Zircon Market

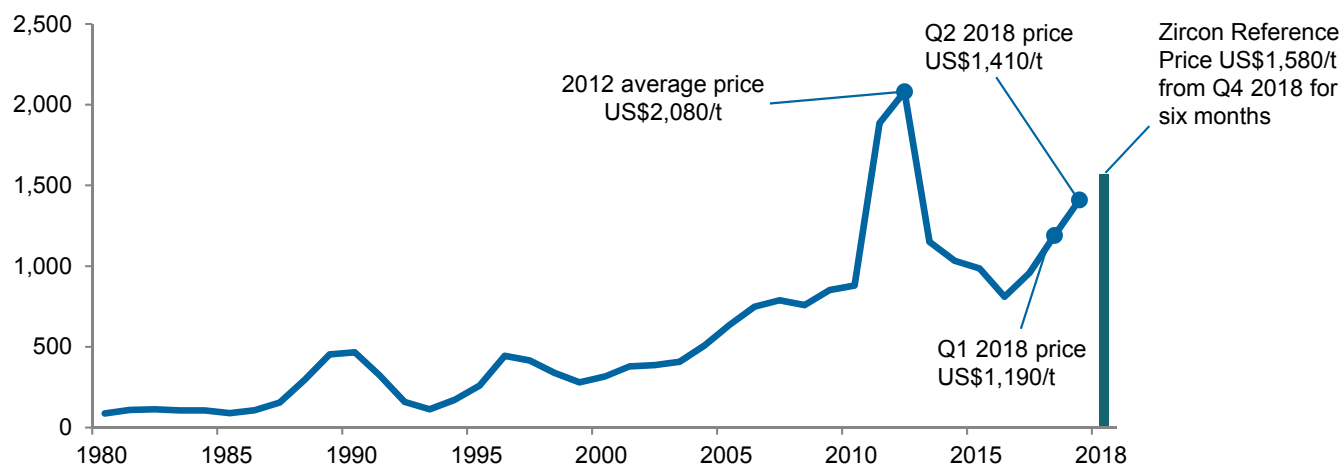
- Price of major zircon substitutes is relatively high, mitigating the incentive to use
- Price increases have encouraged some sectors to thrift with the consequence of lower quality production
- Price of zircon (and most opacifiers) not at a point that supports noticeable substitution in ceramics industry
- Current pricing cadence dampening volatility

Iluka's Approach

- Continue to supply zircon to satisfy underlying demand
- Price points will be based on assessment of end-consumers capability to absorb
- Pricing cadence to avoid historic volatility
- Continued focus on higher value end-markets
- Flexibility in approach to adapt to market conditions

Zircon Price History

Zircon US\$/t



Zircon Sales

For personal use only

| Americas | EMEA (Europe, Middle East, Africa, India) | China | East Asia (excl. China) | | | | | | | | | | | | | | | | | | | | | | | | | | | | | | | | |
|---|--|---|---|---|---------|---|---------|---|--|--------|------------|---------|----|---------|----|---------|----|--|--------|------------|---------|-----|---------|----|---------|-----|--|--------|------------|---------|----|---------|----|---------|----|
| <table><thead><tr><th>Period</th><th>Sales (kt)</th></tr></thead><tbody><tr><td>H1 2017</td><td>7</td></tr><tr><td>H2 2017</td><td>5</td></tr><tr><td>H1 2018</td><td>7</td></tr></tbody></table> | Period | Sales (kt) | H1 2017 | 7 | H2 2017 | 5 | H1 2018 | 7 | <table><thead><tr><th>Period</th><th>Sales (kt)</th></tr></thead><tbody><tr><td>H1 2017</td><td>49</td></tr><tr><td>H2 2017</td><td>48</td></tr><tr><td>H1 2018</td><td>57</td></tr></tbody></table> | Period | Sales (kt) | H1 2017 | 49 | H2 2017 | 48 | H1 2018 | 57 | <table><thead><tr><th>Period</th><th>Sales (kt)</th></tr></thead><tbody><tr><td>H1 2017</td><td>122</td></tr><tr><td>H2 2017</td><td>97</td></tr><tr><td>H1 2018</td><td>109</td></tr></tbody></table> | Period | Sales (kt) | H1 2017 | 122 | H2 2017 | 97 | H1 2018 | 109 | <table><thead><tr><th>Period</th><th>Sales (kt)</th></tr></thead><tbody><tr><td>H1 2017</td><td>19</td></tr><tr><td>H2 2017</td><td>33</td></tr><tr><td>H1 2018</td><td>17</td></tr></tbody></table> | Period | Sales (kt) | H1 2017 | 19 | H2 2017 | 33 | H1 2018 | 17 |
| Period | Sales (kt) | | | | | | | | | | | | | | | | | | | | | | | | | | | | | | | | | | |
| H1 2017 | 7 | | | | | | | | | | | | | | | | | | | | | | | | | | | | | | | | | | |
| H2 2017 | 5 | | | | | | | | | | | | | | | | | | | | | | | | | | | | | | | | | | |
| H1 2018 | 7 | | | | | | | | | | | | | | | | | | | | | | | | | | | | | | | | | | |
| Period | Sales (kt) | | | | | | | | | | | | | | | | | | | | | | | | | | | | | | | | | | |
| H1 2017 | 49 | | | | | | | | | | | | | | | | | | | | | | | | | | | | | | | | | | |
| H2 2017 | 48 | | | | | | | | | | | | | | | | | | | | | | | | | | | | | | | | | | |
| H1 2018 | 57 | | | | | | | | | | | | | | | | | | | | | | | | | | | | | | | | | | |
| Period | Sales (kt) | | | | | | | | | | | | | | | | | | | | | | | | | | | | | | | | | | |
| H1 2017 | 122 | | | | | | | | | | | | | | | | | | | | | | | | | | | | | | | | | | |
| H2 2017 | 97 | | | | | | | | | | | | | | | | | | | | | | | | | | | | | | | | | | |
| H1 2018 | 109 | | | | | | | | | | | | | | | | | | | | | | | | | | | | | | | | | | |
| Period | Sales (kt) | | | | | | | | | | | | | | | | | | | | | | | | | | | | | | | | | | |
| H1 2017 | 19 | | | | | | | | | | | | | | | | | | | | | | | | | | | | | | | | | | |
| H2 2017 | 33 | | | | | | | | | | | | | | | | | | | | | | | | | | | | | | | | | | |
| H1 2018 | 17 | | | | | | | | | | | | | | | | | | | | | | | | | | | | | | | | | | |
| <p>Demand growing on the back of strong industrial activity; particularly refractory and foundry applications.</p> <p>Domestic tile manufacturing industry continues to grow.</p> <p>Iluka focus on specialty markets (including additive manufacturing).</p> | <p>Europe very strong with ceramics industry running hard.</p> <p>Spanish and Italian ceramic producers benefiting from solid export demand.</p> <p>Indian ceramics industry expanding to service both domestic growth and export demands – some competition with China.</p> | <p>Chinese market stable for Iluka, but broader market showing some signs of slowing.</p> <p>Consumption down as:</p> <ol style="list-style-type: none">1. environmental closures limit production; and2. increasing competition with emerging tile producers (e.g. India) reducing exports. | <p>Strength in Japanese economy and exports markets underpinning strong demand.</p> <p>Activity in rest of Asia remains positive.</p> | | | | | | | | | | | | | | | | | | | | | | | | | | | | | | | | |

High-grade Feedstock Market

Result

- Combined Rutile/SR sales of 249kt comparable with H1 2017 (256kt)
- Combined first half 2018 Rutile/SR production of 192kt
- Solid demand reflected in inventory draw

Pricing

- Average price of rutile¹ up 20% to US\$906 per tonne from H1 2017
- 14% price increase for natural rutile applied for second half of 2018

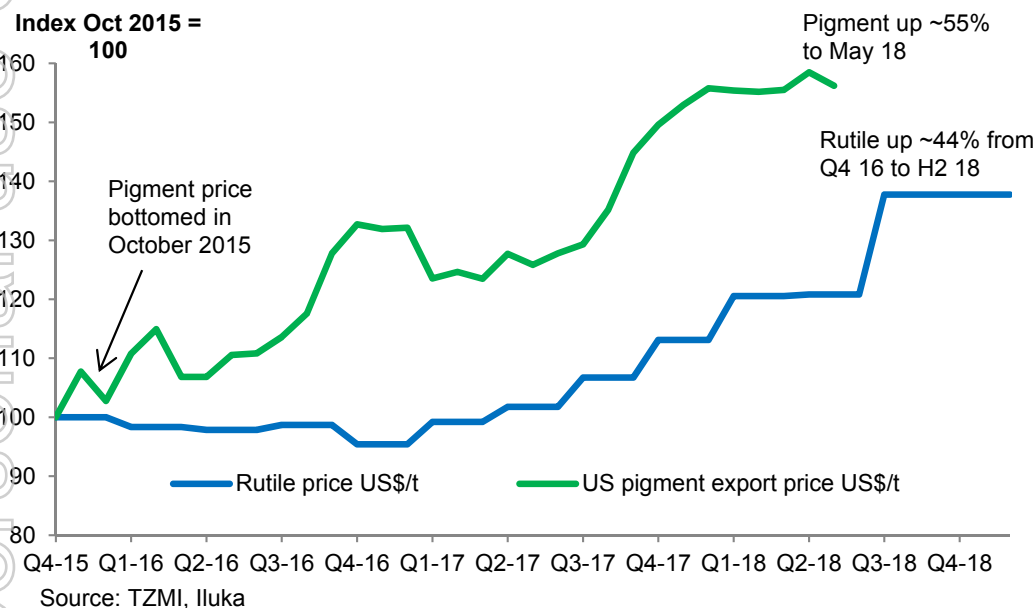
Supply/Demand

- Continued strong demand for high-grade titanium dioxide feedstocks
- All high-grade feedstock production allocated or contracted for H2 2018
- Supply of high-grade feedstock remains tight on back of production interruptions

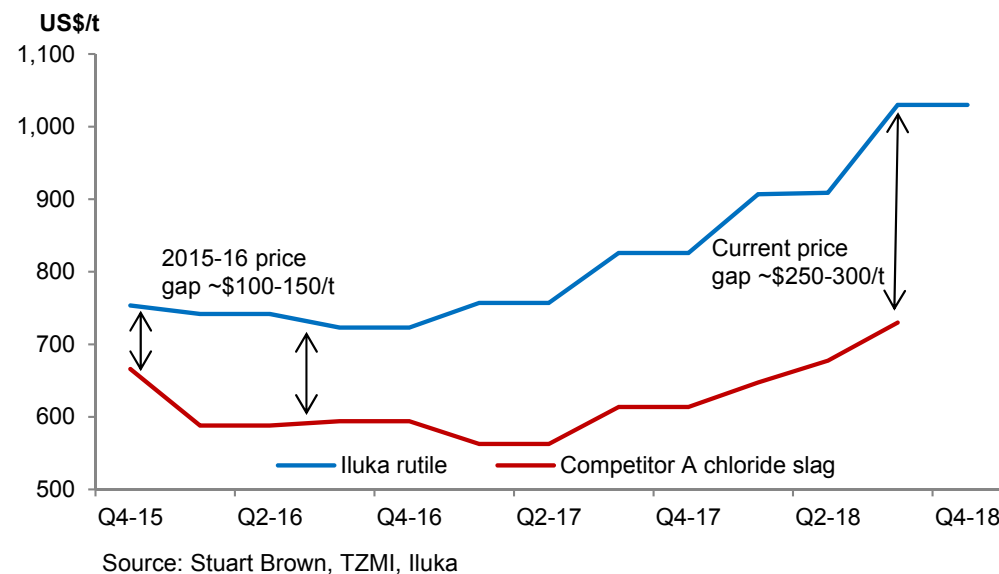
¹Excludes HYTI

2018 Titanium Feedstock Market

Rutile prices increasing, historical lag to pigment prices


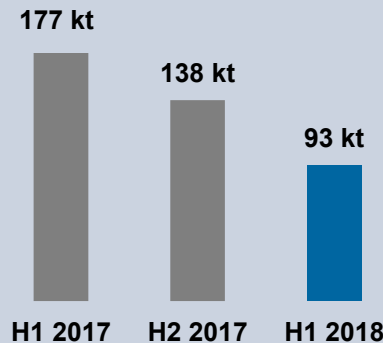
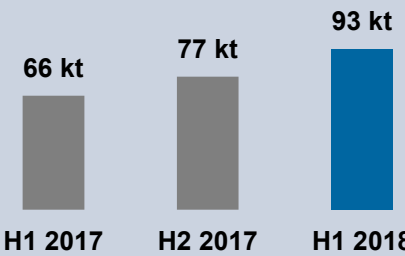


Rutile premium



- Positive conditions in downstream pigment market (90% of demand)
- Pigment prices up 55% from market low (Oct 2015)
- Pigment pricing now showing signs of slowing with latest (Q4) price rise of \$60-\$80/t announced
- Feedstocks prices traditionally lag pigment prices by 6-12 months
- Rutile prices now up 44% from market low (Q4 2016)

High-grade Feedstock Sales

| Americas | EMEA (Europe, Middle East, Africa, India) | Asia | | | | | | | | | | | | | | | | | | | | | | | | |
|--|---|---|---------|----|---------|----|---------|----|---|--------|------------|---------|-----|---------|-----|---------|----|--|--------|------------|---------|----|---------|----|---------|----|
|  <table><thead><tr><th>Period</th><th>Sales (kt)</th></tr></thead><tbody><tr><td>H1 2017</td><td>13</td></tr><tr><td>H2 2017</td><td>37</td></tr><tr><td>H1 2018</td><td>63</td></tr></tbody></table> | Period | Sales (kt) | H1 2017 | 13 | H2 2017 | 37 | H1 2018 | 63 |  <table><thead><tr><th>Period</th><th>Sales (kt)</th></tr></thead><tbody><tr><td>H1 2017</td><td>177</td></tr><tr><td>H2 2017</td><td>138</td></tr><tr><td>H1 2018</td><td>93</td></tr></tbody></table> | Period | Sales (kt) | H1 2017 | 177 | H2 2017 | 138 | H1 2018 | 93 |  <table><thead><tr><th>Period</th><th>Sales (kt)</th></tr></thead><tbody><tr><td>H1 2017</td><td>66</td></tr><tr><td>H2 2017</td><td>77</td></tr><tr><td>H1 2018</td><td>93</td></tr></tbody></table> | Period | Sales (kt) | H1 2017 | 66 | H2 2017 | 77 | H1 2018 | 93 |
| Period | Sales (kt) | | | | | | | | | | | | | | | | | | | | | | | | | |
| H1 2017 | 13 | | | | | | | | | | | | | | | | | | | | | | | | | |
| H2 2017 | 37 | | | | | | | | | | | | | | | | | | | | | | | | | |
| H1 2018 | 63 | | | | | | | | | | | | | | | | | | | | | | | | | |
| Period | Sales (kt) | | | | | | | | | | | | | | | | | | | | | | | | | |
| H1 2017 | 177 | | | | | | | | | | | | | | | | | | | | | | | | | |
| H2 2017 | 138 | | | | | | | | | | | | | | | | | | | | | | | | | |
| H1 2018 | 93 | | | | | | | | | | | | | | | | | | | | | | | | | |
| Period | Sales (kt) | | | | | | | | | | | | | | | | | | | | | | | | | |
| H1 2017 | 66 | | | | | | | | | | | | | | | | | | | | | | | | | |
| H2 2017 | 77 | | | | | | | | | | | | | | | | | | | | | | | | | |
| H1 2018 | 93 | | | | | | | | | | | | | | | | | | | | | | | | | |
| <p>Growth in sales reflects new contractual arrangements combined with previously flagged shift of customers to high-grade ore.</p> | <p>Demand in Europe remains very strong with most plants running hard to meet orders.</p> <p>Iluka sales are down on (i) redistribution of customers base and (ii) production constraints (no Murray Basin production).</p> | <p>Increased volumes on back of expanded sales into China and strong demand from rest of Asia.</p> <p>Demand from the welding market remains positive with industrial grade rutile sales up 120%.</p> | | | | | | | | | | | | | | | | | | | | | | | | |

Financial Results

Doug Warden, Chief Financial Officer

20
18



WWW.ILUKA.COM | ASX:ILU

Key Financial Metrics

H1 2018 versus H1 2017

| | Units | H1 2018 | H1 2017 | % Change | |
|--|-------|-------------------|-------------------|----------|---|
| Z/R/SR Production | kt | 351.0 | 453.1 | (22.5) | ▼ |
| Z/R/SR Sales | kt | 438.6 | 453.8 | (3.3) | ▼ |
| Mineral sands revenue ¹ | \$m | 606.9 | 503.6 | 20.5 | ▲ |
| Underlying mineral sands EBITDA ² | \$m | 249.3 | 123.5 | 101.9 | ▲ |
| MAC EBITDA | \$m | 29.2 | 31.1 | (6.1) | ▼ |
| Underlying Group EBITDA ² | \$m | 278.5 | 154.6 | 80.1 | ▲ |
| Profit (loss) for the period (NPAT) | \$m | 126.1 | (81.5) | n/a | ▲ |
| Operating Cash Flow | \$m | 306.5 | 193.9 | 58.1 | ▲ |
| Free Cash Flow ³ | \$m | 225.5 | 180.2 | 25.1 | ▲ |
| Dividend – interim | cps | 10 | 6 | 66.7 | ▲ |
| | | At 30 Jun 2018 | At 30 Dec 2017 | | |
| Net debt | \$m | 34.4 | 182.5 | -81.1% | ▼ |
| Gearing ratio ⁴ (%) | % | 3.5 | 17.1 | 13.6 pts | ▼ |

¹ Mineral sands revenue and cash costs of production do not include qualifying freight revenue and expenses that are disclosed separately per AASB 15.

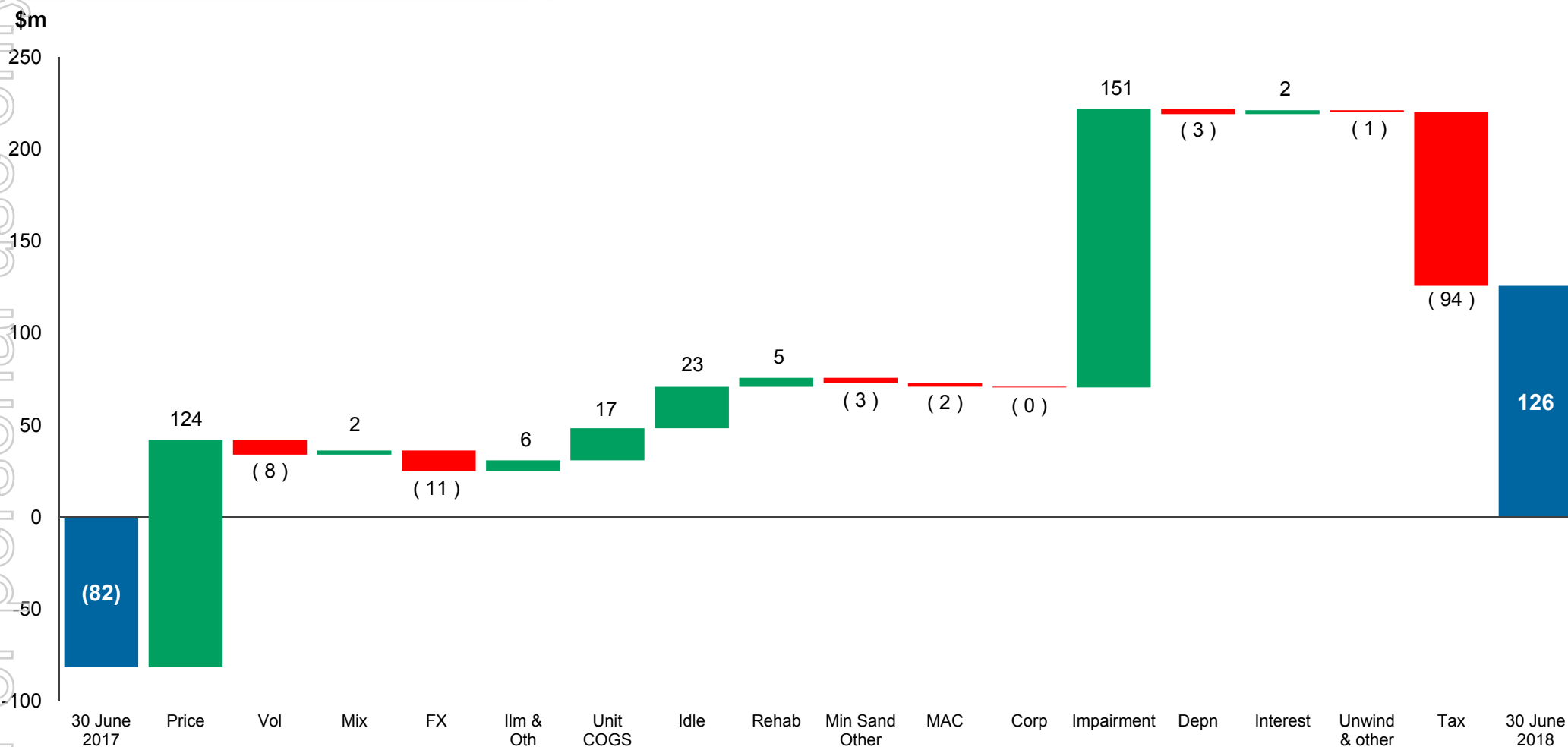
² Underlying Group EBITDA excludes non-recurring adjustments including impairments and changes to rehabilitation provisions for closed sites which are non-cash in nature.

³ Free cash flow is determined as cash flow before refinance costs, proceeds/repayment of borrowings and dividends paid.

⁴ Net debt / net debt + equity

NPAT

H1 2018 versus H1 2017

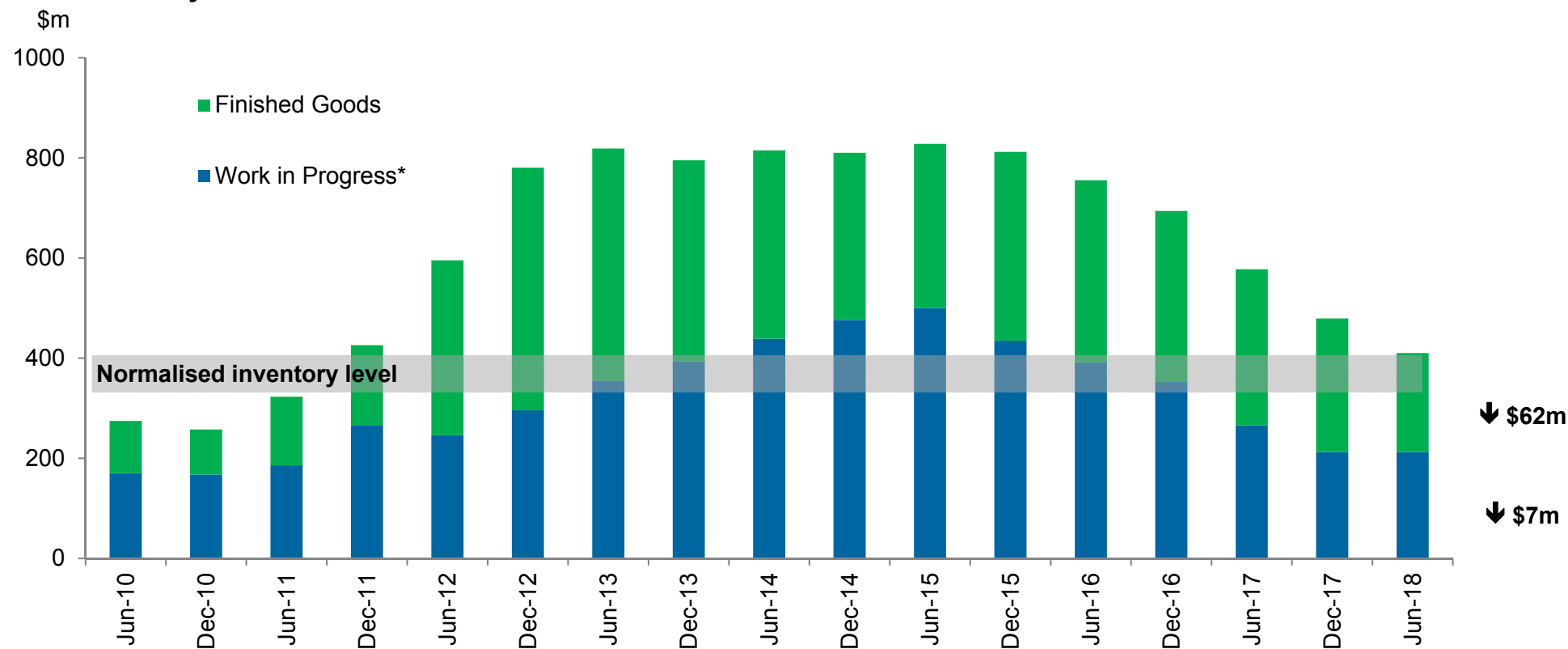


Key drivers for movement in NPAT from H1 2017:

- improved sales prices across product suite
- lower idle costs due to restart of operations at Jacinth-Ambrosia
- idling of Hamilton MSP in October 2017 led to an impairment charge of \$151 million and an increase to the rehabilitation provision of \$5 million recorded in 2017 with no such charges occurring in 2018

Continued Inventory Draw Down

Total Inventory

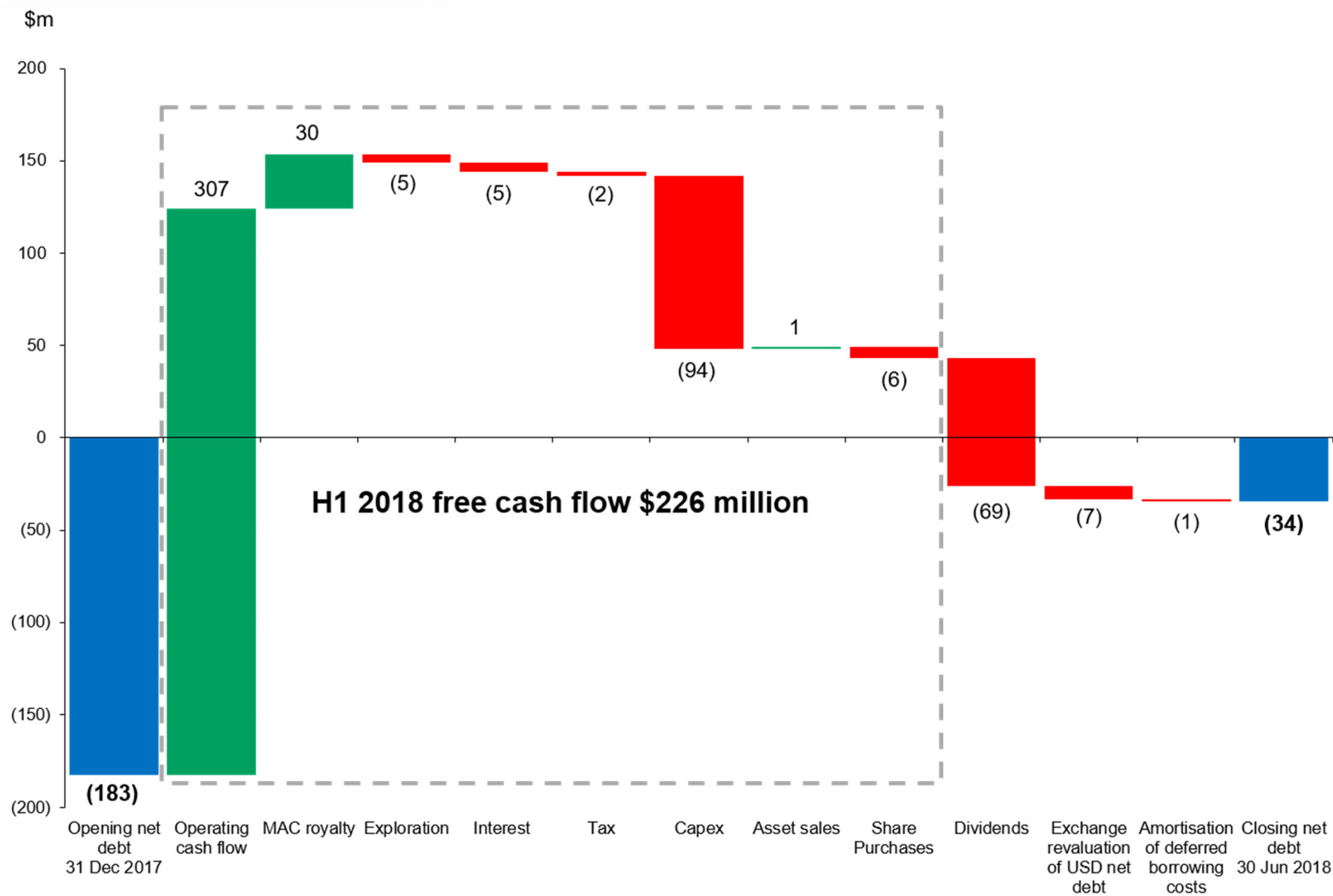


- Total inventory reduced by \$69 million to \$410 million
- Continued sell down of finished goods inventory
- Inventory levels proximate to 'normalised' range

¹ Includes consumables and ilmenite

Net Debt Reduction

For personal use only



Balance Sheet Capacity

Significantly strengthened balance sheet

- H1 2018 free cash flow of \$226 million
- 81% reduction in net debt from 31 December 2017 to \$34 million
- Gearing¹ at 3.5%

Total facilities of \$710 million during reporting period

- Undrawn facilities of \$593 million at 30 June 2018
- Facilities reduced by \$100 million to \$610 million on 4 July 2018
- Reduces cost of holding unused facilities
- Significant funding headroom still available

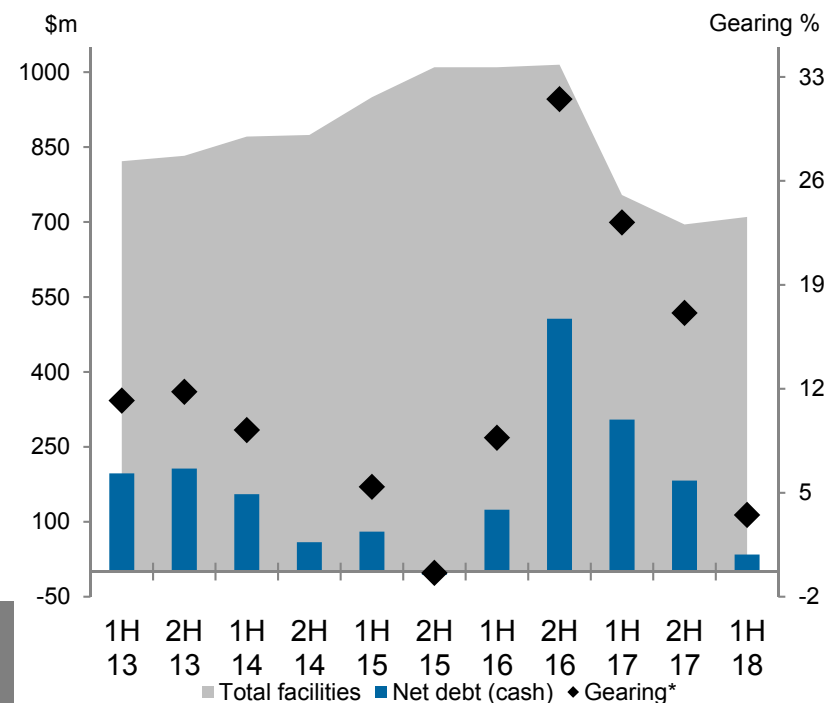
Capital expenditure of \$94 million in H1 2018 (H1 2017: \$25 million)

- FY18 guidance of ~\$385 million, second half weighted

Balance Sheet Framework

Target credit metrics broadly consistent with investment grade credit profile, whilst balancing impacts of commodity pricing and investment factors through the cycle

Net Debt, Gearing and Funding Headroom



¹Net debt / net debt + equity

Dividend

Dividend Framework

Pay a minimum 40% of free cash flow not required for investing or balance sheet activity

Distribute maximum practicable available franking credits

- 10 cents per share fully franked interim dividend payable 27 September 2018, represents 19% of H1 free cash flow
- Board considered elevated near term capital expenditure in 2018/19 for Cataby development and Sierra Rutile expansions and tax payments attributable to 2018 earnings
- Cumulative 57% of free cash flow distributed since dividends recommenced in 2010
- Franking credit balance of \$44 million at 30 June 2018

Distribution Metrics

| | |
|---|---------------|
| H1 2018 free cash flow pay out ratio | 19% |
| 2010 – 30 June 2018 cumulative payout ratio | 57% |
| Cumulative free cash flow returned to shareholders | \$899 million |
| Cumulative cents per share returned to shareholders | 215 cents |
| Cumulative retained free cash flow | \$688 million |

Mining Area C

- Iluka holds a royalty over iron ore produced from specific tenements of BHP Billiton's Mining Area C (MAC) hub in Western Australia
- BHP South Flank Development received Board approval in June 2018
 - South Flank expansion will replace production from Yandi (depleted in 5-10 years)
 - South Flank contained within Mining Area C royalty area
 - Potential for up to ~150mtpa from MAC hub (current MAC production ~55mtpa)
 - BHP targeting first ore ~2021

| | | 1H 2018 | 1H 2017 | % change |
|--------------------------|-------|---------|---------|----------|
| Sales volumes | mdmt | 27.3 | 27.0 | 1.1 |
| Implied price | A\$/t | 83.9 | 93.8 | (10.6) |
| Net Royalty income | \$m | 28.2 | 31.2 | (9.6) |
| Annual capacity payments | \$m | 1.0 | - | - |
| Iluka EBITDA | \$m | 29.2 | 31.1 | (6.1) |

(mdmt = million dry metric tonnes)

Operations and Projects

20
18



WWW.ILUKA.COM | ASX:ILU

Operations Update



First half Z/R/SR production of 351kt, 23% lower than first half 2017

- Lower production expected given cessation of HMC processing from Murray Basin

Jacinth-Ambrosia

- 329kt of HMC produced since mining restarted December 2017
- H1 2018 zircon production at Jacinth-Ambrosia 135kt
- Reduction in processing rate at Narngulu to optimise recovery of final product

Sierra Rutile

First half rutile production of 61kt, down 23% from H2 2017

- Production affected by lower than expected mining rates
- Lanti dredge affected by age-related failure of equipment

Cataby

For personal use only

- Large, chloride-ilmenite rich deposit, 150km north of Perth
 - Underpins continued synthetic rutile production at Capel
 - Offtake secured for 85% of SR production for minimum four years
 - Conventional mineral sands development
- All works progressing on-time and on-budget
 - Accommodation and power distribution nearing completion
 - Concentrator relocated from Eneabba, reassembly underway
 - Mining unit construction well advanced
 - Overburden removal underway
- Average annual production over 8.5 year mine life:
 - 200kt synthetic rutile (from ilmenite)
 - 30kt natural rutile
 - 50kt zircon
 - Potential to add four years to life of mine

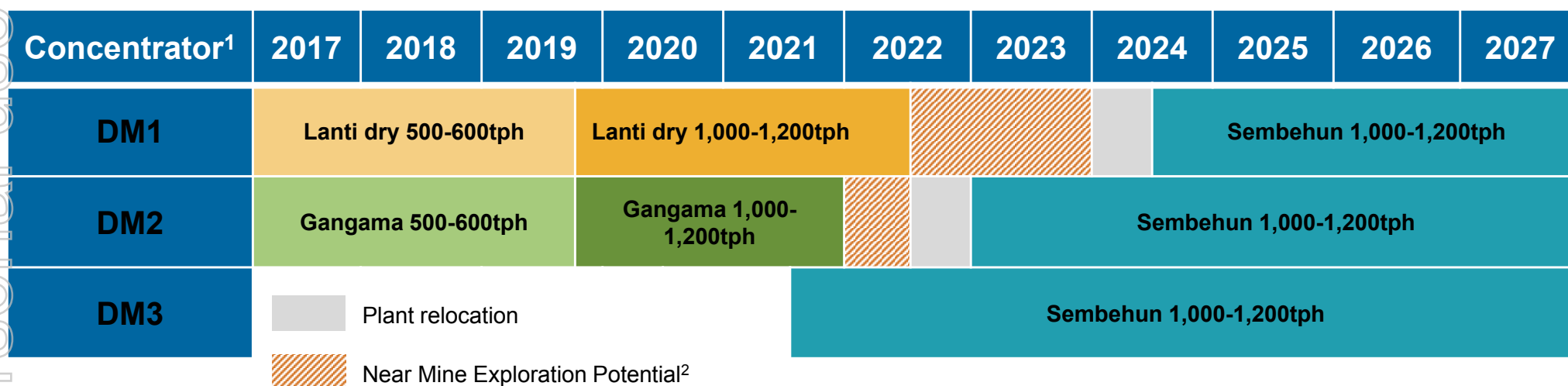
- DFS completed 2016
- Development approved December 2017
- Est. capex \$250-\$275 million
- 18 month construction period
- First production planned 2019



Sierra Rutile Expansion Profile



- Sierra Rutile expansion occurs across three mining fronts
- Initial Sembehun development includes infrastructure early works for road and bridge construction
- Mine moves from Lanti and Gangama are required to maintain expanded production levels



Note: Mining rates dependent on spiral plant feed

1. Rates refer to tonnes per hour (tph) ore feed rate and are an indicator of capacity of each concentrator and not expected production.
 2. Extension of DM1 + DM2 dependent on further study of near mine exploration potential. DM1 Production to 2027 includes approximately 12% Inferred Mineral Resource and 6% Exploration Target. DM2 Production to 2027 includes 5% Inferred Mineral Resource.
- While the Exploration Potential is hosted in the same geological setting as historically mined material, the production forecast from near mine exploration potential is based on a number of assumptions and limitations with the estimated grade and quantity being conceptual in nature. It is uncertain if future exploration will result in the estimation of a Mineral Resource or Ore Reserve.
 - The Ore Reserves, Mineral Resources and Exploration Targets underpinning the Production Targets have been signed-off by the Competent Person in previous releases to the ASX: Updated Mineral Resources and Ore Reserve Statement, dated 20 February 2017 and Sembehun Mineral Resource Increase and Pejebu Exploration Target, Sierra Rutile, dated 15 August 2018.
 - There is a low level of geological confidence associated with inferred mineral resources and there is no certainty that further exploration work will result in the determination of indicated mineral resources or that the production target itself will be realised.
 - The potential quality and grade of an exploration target is conceptual in nature, there has been insufficient exploration to determine a mineral resource and there is no certainty that further exploration work will result in the determination of mineral resources or that the production target itself will be realised.

Sierra Rutile – Near Mine Exploration

Near Mine Exploration Target¹

Consolidation and interrogation of historical SRL drilling data highlighted the Pejebu Exploration Target

Pejebu Exploration Target is 15 – 20 Mt HM at 0.9% to 1.1% in situ rutile grade

Potential 135 to 220 thousand tonne in situ rutile

Adjacent to the historical Pejebu dredge path

Drilling in progress, Mineral Resource Modelling in Q4

Near Mine Resource Development

Drilling in progress to upgrade confidence of existing ML1 Mineral Resources

Drilling in progress at Gangama North and West, Taninahun and Ndendemoia Prospects

Adjacent or proximal to current production areas

Conventional material that may feed DM1 and DM2

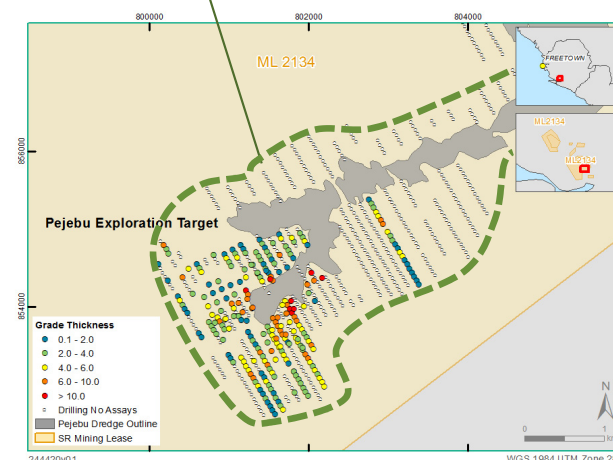
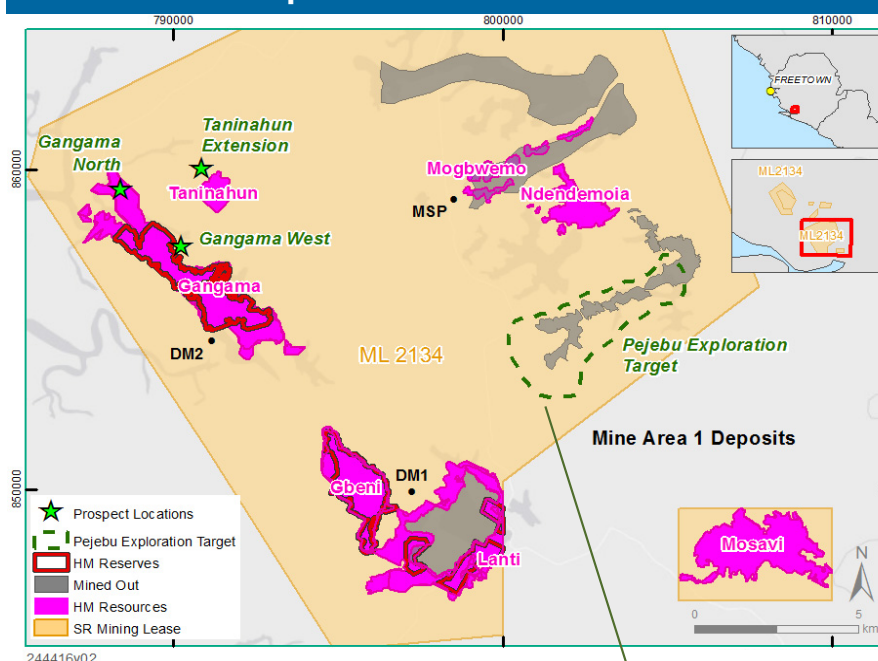
Updated Mineral Resource estimation in Q4

Updated Mineral Resource reporting expected early 2019

Additional feed to DM1 and DM2 may delay mining unit relocation to Sembehun

¹ Refer to ASX Release “Sembehun Mineral Resource Increase and Pejebu Exploration Target, Sierra Rutile” 15 August 2018. The potential quantity and grade is conceptual in nature, there has been insufficient exploration to estimate a Mineral Resource and it is uncertain if further exploration will result in the estimation of a Mineral Resource.

Sierra Rutile deposits



Sierra Rutile – Sembehun Mineral Resource

Sembehun Mineral Resource addition¹

Additional Mineral Resource based on updated data compilation, geological interpretation and Mineral Resource modelling

0.62 Mt of rutile added to Sembehun Mineral Resource

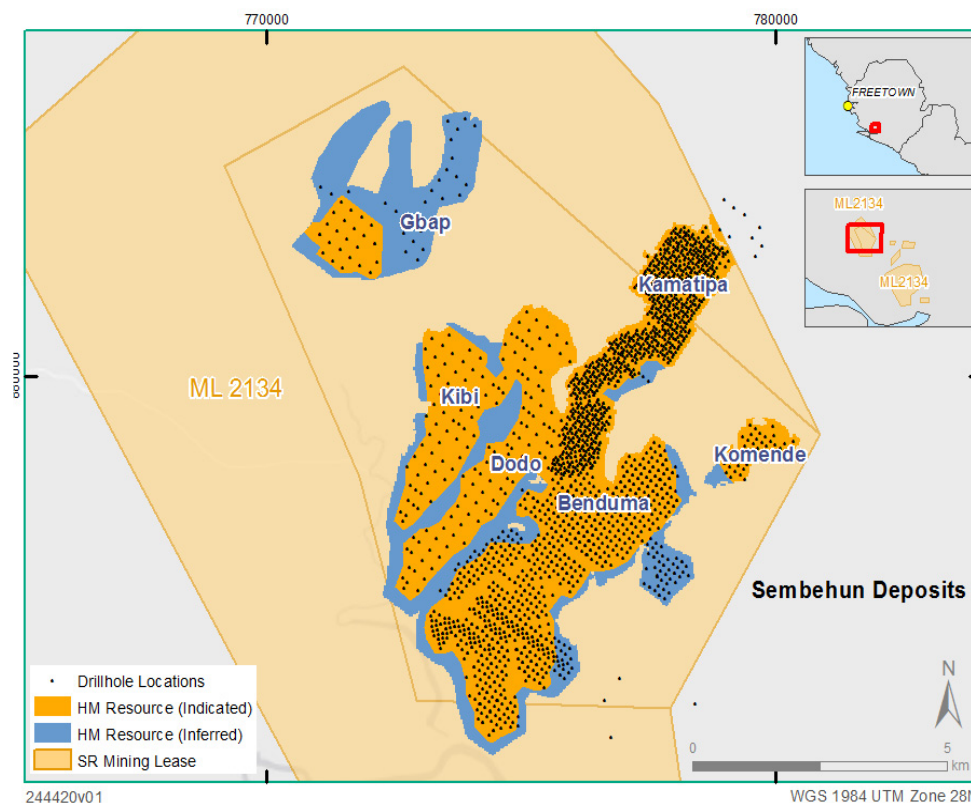
Total Mineral Resource of 5.0 Mt of rutile

Inferred and Indicated category according to JORC 2012

Dedicated 75,000m drilling program from now to 2021 to:

- improve confidence of Mineral Resource estimate
- test areas adjacent and proximal to Mineral Resource

Sembehun deposits



Sembehun Mineral Resource increased by 0.62 Mt to a total of 5.0 Mt of rutile

Dedicated 75,000m drilling program 2018 – 2021 to upgrade Sembehun Mineral Resources

¹ Refer to ASX Release "Sembehun Mineral Resource Increase and Pejebu Exploration Target, Sierra Rutile" 15 August 2018

Sierra Rutile – Sembehun and MSP Expansion



Sembehun mine development

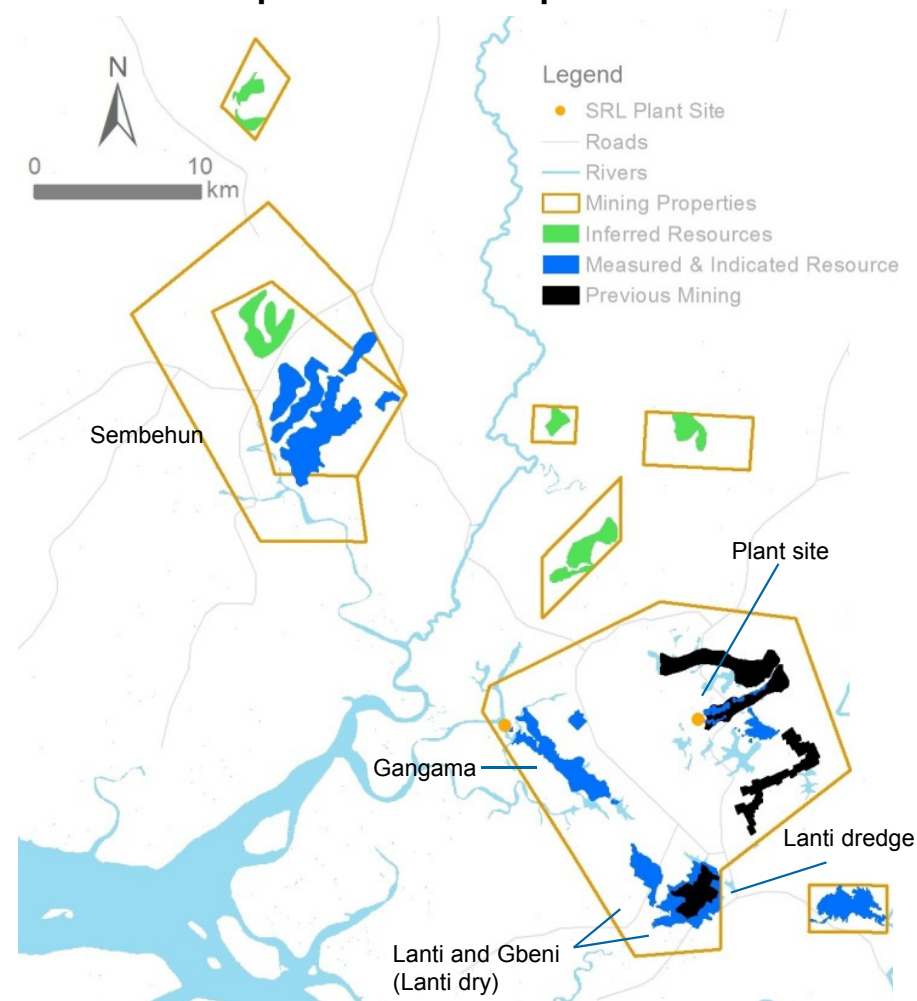
New 1,000 -1,200 tph mine northwest of existing operations

Definitive feasibility study expected to complete Dec 2018

Planned commissioning 2021¹

- Original acquisition capital expenditure estimated at US\$300 million over 2017-2020² for expansion projects (Lanti, Gangama and Sembehun), safety and operational improvements and sustaining capital
- Current estimates indicate 40-60% increase from US\$300 million in real terms to deliver these projects
- Increase largely reflects higher estimates of Sembehun and mineral separation plant (MSP) expansion projects
- Iluka focussed on disciplined capital deployment; options for reducing capital spend and maximising returns being investigated

Sierra Rutile operations and deposits



¹ Iluka announced in February 2018, that planned commissioning was deferred one year to 2021 to allow further financial and operational evaluation and develop reasonable estimates of project cost based on the outcome of a detailed feasibility study and that, based on this timing, bridge and road construction are expected to commence in 2019, subject to Board approval.

² US\$300 million capital estimate based in 2015 real dollars, disclosed in *Sierra Rutile Acquisition* presentation (9 December 2016).

Updated 2018 Physicals Guidance

| Key Parameters | | Feb 2018 Guidance | Aug 2018 Updated Guidance | Comments |
|--------------------------|-----------|-------------------|---------------------------|---|
| Annual production | | | | |
| Zircon | kt | 300 | 330 | Zircon production is expected to be approximately 30kt higher due to the supply of additional tonnes of zircon in concentrate (ZIC) in an attempt to alleviate supply constraints |
| Rutile | kt | 200 | 185 | Rutile production is expected to be ~15kt lower at Sierra Rutile due to the poor first half performance, as noted in the June Quarterly Review (24 July 2018). Group production includes 40kt of HYTI |
| Synthetic Rutile | kt | 205 | 205 | |
| Total Z/R/SR | kt | 705 | 720 | |

Updated 2018 Cost Guidance

| Key Parameters | Feb 2018 Guidance | Aug 2018 Updated Guidance | Comments |
|--|-------------------|---------------------------|---|
| Cash Costs (A\$m) | | | |
| Cash costs of production (incl. ilmenite and by-products) ³ | 415 | 450 | Higher cash production costs due to higher Sierra Rutile costs (US\$13 million; US\$4 million expected to be recurring in 2019) from increased dredge maintenance costs, higher fuel and commissioning costs with the in-pit mining unit. Exchange rate depreciation has also contributed to higher Australian dollar costs on conversion of Sierra Rutile US dollar cost base. Australian operations costs have increased by \$10 million due to increased production of both finished goods and HMC. |
| Restructure and idle costs | 20 | 20 | |
| Resource development and corporate costs ⁴ | 75 | 85 | Higher costs with increased expenditure on the Fine Minerals project |
| Marketing, selling and royalty costs | Not guided | Not guided | |
| Average annual unit costs and capital expenditure | | | |
| Unit cash costs of production (A\$/t Z/R/SR produced) | 575 | 625 | Higher unit cash cost of production mainly due to increased costs at Sierra Rutile |
| Unit cost of goods sold (A\$/t Z/R/SR sold) | 710 | 725 | Reflects higher SRL unit cash costs |
| Capital expenditure (A\$m) | 410 | 385 | Lower due to deferral of the Balranald field trial to 2019 (announced in June Quarterly Review) |

- No changes to non-cash cost guidance from that provided in February 2018

Supplementary Information

20
18



WWW.ILUKA.COM | ASX:ILU

Production and Sales Volumes

| | H1 2018 | H1 2017 | % change |
|--|--------------|--------------|---------------|
| Production | | | |
| Zircon kt | 158.9 | 203.7 | (22.0) |
| Rutile kt | 82.8 | 149.8 | (44.7) |
| Synthetic rutile kt | 109.3 | 99.6 | 9.7 |
| Total Z/R/SR production kt | 351.0 | 453.1 | (22.5) |
| Ilmenite | 210.8 | 228.1 | (7.6) |
| Total mineral sands production kt | 561.8 | 681.2 | (17.5) |
| Heavy mineral concentrate produced kt | 469 | 314 | 49.2 |
| Heavy mineral concentrate processed kt | 529 | 713 | (25.8) |
| Sales | | | |
| Zircon kt | 189.6 | 197.4 | (4.0) |
| Rutile kt | 136.1 | 118.4 | 14.9 |
| Synthetic rutile kt | 112.9 | 138.0 | (18.2) |
| Total Z/R/SR kt | 438.6 | 453.8 | (3.3) |
| Ilmenite kt | 119.5 | 95.1 | 25.7 |
| Total sales volumes kt | 558.1 | 548.9 | 1.7 |
| Revenue and Cash Costs | | | |
| Mineral sands revenue ¹ \$m | 606.9 | 503.6 | 20.5 |
| Total cash cost of production \$m | 224.9 | 200.1 | 12.4 |
| Unit cash production cost per tonne of Z/R/SR produced ² \$/t | 617 | 424 | 45.5 |
| Unit cost of goods sold per tonne of Z/R/SR sold \$/t | 753 | 772 | (2.5) |
| Revenue per tonne of Z/R/SR sold \$/t | 1,292 | 1,036 | 24.7 |

All currency is Australian dollar denominated unless otherwise indicated.

1. Represents FOB revenue.

2. Excludes ilmenite and by-products.

Weighted Average Received Prices

| | H1 2017 | H2 2017 | H1 2018 |
|--|--------------------|--------------------|--------------------|
| <i>US\$/tonne FOB</i> | | | |
| Zircon Premium and Standard | 871 | 1,053 | 1,278 |
| Zircon (all products, including zircon-in-concentrate) ¹ | 850 | 1,037 | 1,240 |
| Rutile (excluding HYTI) ² | 756 | 825 | 906 |
| Synthetic rutile | Refer Note 3 | Refer Note 3 | Refer Note 3 |

Note 1: Zircon prices reflect the weighted average price for zircon premium, zircon standard and zircon-in-concentrate. The prices for each product vary considerably, as does the mix of such products sold period to period. In the first half of 2018 the split of premium, standard and concentrate by zircon sand-equivalent was approximately: 51%:33%:15% (2017 full year: 56%:32%:12%).

Note 2: Included in rutile sales volumes reported elsewhere is a lower titanium dioxide product, HYTI that typically has a titanium dioxide content of 70 to 91%. This product sells at a lower price than rutile, which typically has a titanium dioxide content of 95%. In first half 2018, 19% of total sales in this category were of the lower grade HYTI material (2017 full year: 18%).

Note 3: Iluka's synthetic rutile sales are, in large part, underpinned by commercial offtake arrangements. The terms of these arrangements, including the pricing arrangements are commercial in confidence and as such not disclosed by Iluka. Synthetic rutile, due to its lower titanium dioxide content than rutile, is priced lower than natural rutile.

Summary - Group Results



| \$m | H1 2018 | H2 2017 | H1 2017 |
|---|---------------|----------------|----------------|
| Mineral sands revenue | 606.9 | 513.9 | 503.6 |
| Underlying mineral sands EBITDA | 249.3 | 177.4 | 123.5 |
| Mining Area C royalty | 29.2 | 28.5 | 31.1 |
| Underlying Group EBITDA* | 278.5 | 205.9 | 154.6 |
| Underlying Group EBITDA margin % | 45.9 | 40.1 | 30.7 |
| Depreciation and amortisation | (42.6) | (52.5) | (58.5) |
| Impairment expense | - | (34.0) | (151.4) |
| Group EBIT | 209.9 | (40.4) | (93.0) |
| Profit (loss) before tax | 193.6 | (56.9) | (108.7) |
| Tax expense | (67.5) | (33.2) | 27.2 |
| Profit (loss) after tax | 126.1 | (90.1) | (81.5) |
| EPS (cents per share) | 30.0 | (21.5) | (19.5) |
| Free cash inflow (outflow) | 225.5 | 141.7 | 180.2 |
| Free cash inflow (outflow) (cents per share) | 53.4 | 33.8 | 43.0 |
| Dividend – fully franked (cents per share) | 10.0 | 25.0 | 6.0 |
| Net debt | (34.4) | (182.5) | (304.6) |
| Gearing (net debt /net debt + equity) % | 3.5 | 17.1 | 23.2 |
| Average A\$/US\$ exchange rate | 77.2 | 77.9 | 75.4 |

Income Statement



| \$ million | H1 2018 | H1 2017 | % change |
|--|--------------|----------------|--------------|
| Z/R/SR revenue | 566.6 | 470.0 | 20.6 |
| Ilmenite and other revenue | 40.3 | 33.6 | 19.9 |
| Mineral sands revenue | 606.9 | 503.6 | 20.5 |
| Cash costs of production | (224.9) | (200.1) | (12.4) |
| Inventory movement - cash costs of production | (49.8) | (78.6) | 36.6 |
| Restructure and idle capacity charges | (10.8) | (33.3) | 67.6 |
| Government royalties | (17.9) | (13.3) | (34.6) |
| Marketing and selling costs ¹ | (18.0) | (18.5) | 2.7 |
| Asset sales and other income | 1.0 | 0.4 | 150.0 |
| Resource development | (12.5) | (14.0) | 10.7 |
| Corporate and other costs | (23.6) | (23.2) | (1.7) |
| Foreign exchange gain (loss) | (1.1) | 0.5 | n/a |
| Underlying mineral sands EBITDA² | 249.3 | 123.5 | 101.9 |
| Mining Area C EBITDA | 29.2 | 31.1 | (6.1) |
| Underlying Group EBITDA | 278.5 | 154.6 | 80.1 |
| Depreciation and amortisation | (42.6) | (58.5) | 27.2 |
| Inventory movement - non-cash production costs | (25.5) | (30.6) | 16.7 |
| Rehabilitation costs for closed sites | (0.5) | (5.4) | 90.7 |
| Share of Metalysis Ltd's losses (associate) | - | (1.7) | n/a |
| Impairment of assets | - | (151.4) | n/a |
| Group EBIT | 209.9 | (93.0) | n/a |
| Net interest and bank charges | (7.1) | (9.2) | 22.8 |
| Rehabilitation unwind and other finance costs | (9.2) | (6.5) | (41.5) |
| Profit (loss) before tax | 193.6 | (108.7) | n/a |
| Tax benefit (expense) | (67.5) | 27.2 | n/a |
| Profit (loss) for the period (NPAT) | 126.1 | (81.5) | n/a |
| Average AUD/USD rate for the period (cents) | 77.2 | 75.4 | 2.4 |

¹ Freight revenue and expenses are included as a net number in marketing and selling costs.

² Underlying Group EBITDA excludes non-recurring adjustments including impairments and changes to rehabilitation provisions for closed sites which are non-cash in nature.

Reconciliation of Non-IFRS Financial Information to Profit before Tax

| | Aus | US | SRL | Exploration & Other | Mineral Sands | MAC | Corp | Group |
|--------------------------------------|--------------|--------------|--------------|------------------------|------------------|-------------|---------------|----------------|
| Mineral Sands Revenue | 507.8 | 23.0 | 88.5 | (12.4) | 606.9 | | | 606.9 |
| AASB 15 freight revenue | 20.1 | 1.5 | 4.1 | | 25.7 | | | 25.7 |
| Mineral Sands Expenses | (245.8) | (27.1) | (78.6) | (7.1) | (358.6) | | | (333.8) |
| Mining Area C | | | | | - | 29.2 | | 29.2 |
| FX | | | | | - | | (1.1) | (1.1) |
| Corporate costs | | | | | - | | (23.6) | (23.6) |
| EBITDA | 282.1 | (2.6) | 14.0 | (19.5) | 274.0 | 29.2 | (24.7) | 278.5 |
| Depn & Amort | (21.1) | | (19.7) | (1.6) | (42.4) | (0.2) | | (42.6) |
| Inventory movement - non-cash | (26.9) | | 1.4 | | (25.5) | | | (25.5) |
| Rehabilitation for closed sites | (0.5) | | | | (0.5) | | | (0.5) |
| EBIT | 233.6 | (2.6) | (4.3) | (21.1) | 205.6 | 29.0 | (24.7) | 209.9 |
| Net interest costs | | | | | - | | (7.1) | (7.1) |
| Rehab unwind and other finance costs | (5.1) | (2.2) | (1.0) | | (8.3) | | (0.9) | (9.2) |
| Profit Before Tax | 228.5 | (4.8) | (5.3) | (21.1) | 197.3 | 29.0 | (32.7) | 193.6 |
| Segment result | 228.5 | (4.8) | (5.3) | | | 29.0 | | 247.4 |

For more information contact:

Adele Stratton

General Manager, Finance, Investor Relations & Corporate Affairs

investor.relations@iluka.com

www.iluka.com



20
18



WWW.ILUKA.COM | ASX:ILU